

Warm and Toasty Mug Cozy

Start off your day with a special touch on your coffee cup.



Loom: Sock Loom 2.

Yarn: Approximately 30 yards of worsted weight wool. Samples shown in Knit Picks Swish in worsted weight, colors Rouge and White.

Notions: knitting tool, tapestry needle, crochet hook size J, 3 small buttons.

Abbreviations:

K=knit stitch

P=purl stitch

SSK=slip, slip knit

YO=Yarn over

Sl1-k2tog-ssso: slip 1, k2tog, pass over slipped stitch

Instructions

Cast on 19 stitches, prepare to work a flat panel.

Row 1: p to the end of row.

Row 2 (and every even row): k to the end of row

Row 3: p to the end of row.

Row 5: p4, k4, ssk, yo, k5, p4

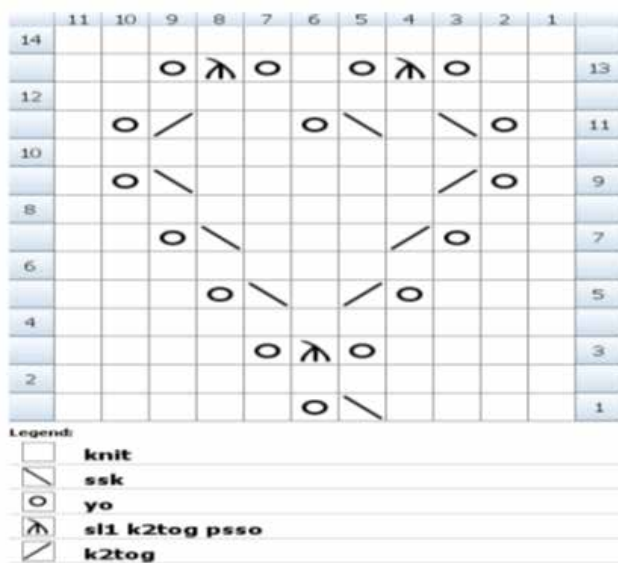
Row 7: p4, k4, yo, sl1 k2tog pssso, yo, k4, p4

Row 9: p4, k3, yo, k2tog, k1, ssk, yo, k3, p4

Row 11: p4, k2, yo, k2tog, k3, ssk, yo, k2, p4

Row 13: p4, k1, yo, k2tog, k5, ssk, yo, k1, p4





Row 15: p4, k1, yo, ssk, k1, ssk, yo, k2, k2tog, yo, k1, p4

Row 17: p4, k2, yo, sl1 k2tog psso, yo, k1, yo, sl1 k2tog psso, yo, k2, p4

Row 18: k to the end of row.

Repeat Rows 1-Row 18: 2 more times.

Repeat Rows 1-4.

Bind off with basic bind off method. Leave a 20" yarn tail.

Using yarn tail, and crochet hook, chain 6, connect it down to first stitch of the bound off edge, single crochet 6, chain 6, connect it down to the middle of the bound off edge, single crochet 6, chain 6 and connect it down to the bound off edge, single crochet 1. Bind off.

