



'Tree of Life' Christmas Stocking

Designed by Isela Phelps.



PATTERN NOTES

The Decorative Trim (red section) is worked separately as a flat panel in garter stitch, after stocking is complete, the cuff is

LOOM: All-n-One Loom, set at 60 pegs.

YARN: Approx 260 yards of worsted weight yarn. Red Heart Shimmer in Red and Snow.

NOTIONS: Knitting tool, tapestry needle, 2 double pointed needles in size 4 (used for grafting the toes).

SIZE: 21" x 6"

GAUGE: 10 sts x 13 rows = 2 inches in stockinette, but it doesn't need to be accurate, it is just a big sock :)

seamed/sewn to the top of the stocking. The tassel cord and pom pom are created after by braiding yarn and placing a pom pom at the end of the braid.

Wrap and Turn=Lift the loop presently on the peg and hold it, take working yarn around the peg by going to the inside of the loom then wrapping the yarn around the peg so the yarn ends to the front of the peg. Place the loop back on the peg.

ABBREVIATIONS

k=knit stitch
p=purl cont=continue
sts=stitches
BO=Bind off
CO=Cast on
rnd=rnd
CC=Contrasting Color (Red)
MC=Main Color (Snow)





'Tree of Life' Christmas Stocking

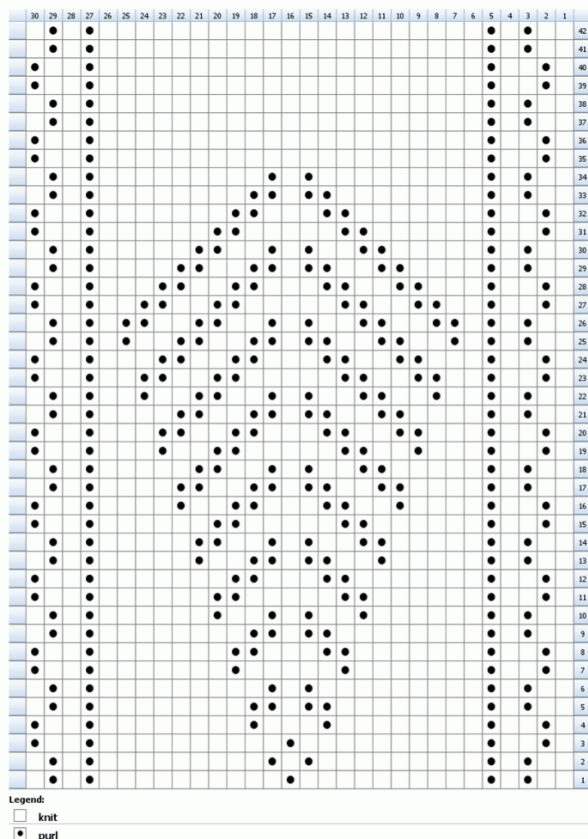
Stitch Pattern: Garter Stitch

Row 1: k

Row 2: p

Rows 1 and 2 produce 1 garter stitch ridge.

INSTRUCTIONS



Decorative Trim Panel

Worked as a flat panel

Using CC, CO 24 sts

Rows: 1-120: Work in Garter Stitch (60 Garter stitch ridges).

BO, leaving a 15 inch yarn tail.

Stocking

Worked in the round, set knitting loom in the round to 60 pegs.

Using MC, CO 60 sts, to work in the round

Rnd 1: k

Rep Rnd 1 until item measure 5.5" from CO edge.

****Next rnd: *k1, p1; rep from * to end of rnd.**

Next rnd: *p1, k1; rep from * to end of rnd.

Rep from ** to ** 2 more times.

Next 42 rnds: work Tree of Life Chart

Cut yarn leaving a 5" yarn tail. Attach yarn at peg 16 cont to heel instructions

Heel

Worked in short-rows over 30 stitches (over pegs 16-45, re-number the pegs so they are 1 to 30 instead of 16 to 45; peg 16 is peg 1 from this point forward).

Knit from peg 1 to 29. Wrap and turn on peg 30.

Knit from peg 29 to 2. Wrap and turn on peg 1.

Knit from peg 2 to 28. Wrap and turn on peg 29.

Knit from peg 28 to 3. Wrap and turn on peg 2.

Knit from peg 3 to 27. Wrap and turn on peg 3.

Knit from peg 27 to 4. Wrap and turn on peg 4.

Knit from peg 4 to 26. Wrap and turn on peg 27.

Knit from peg 26 to 5. Wrap and turn on peg 4.

Knit from peg 5 to 25. Wrap and turn on peg 26.

Knit from peg 25 to 6. Wrap and turn on peg 5.

Knit from peg 6 to 24. Wrap and turn on peg 25.





'Tree of Life' Christmas Stocking

Knit from peg 24 to 7. Wrap and turn on peg 6.
Knit from peg 7 to 23. Wrap and turn on peg 24.
Knit from peg 23 to 8. Wrap and turn on peg 7.
Knit from peg 8 to 22. Wrap and turn on peg 23.
Knit from peg 22 to 9. Wrap and turn on peg 8.
Knit from peg 9 to 23; lift the wrap(s) together with the stitch on the peg. Wrap and turn on peg 24.
Knit from peg 23 to peg 8, lift the wrap(s) together with the stitch on the peg. Wrap and turn on peg 7.
Knit from peg 8 to 24; lift the wrap(s) together with the stitch on the peg. Wrap and turn on peg 25.
Knit from peg 24 to peg 7; lift the wrap(s) together with the stitch on the peg. Wrap and turn on peg 6.
Knit from peg 7 to 25; lift the wrap(s) together with the stitch on the peg. Wrap and turn on peg 26.
Knit from peg 25 to peg 6; lift the wrap(s) together with the stitch on the peg. Wrap and turn on peg 5.
Knit from peg 6 to 26; lift the wrap(s) together with the stitch on the peg. Wrap and turn on peg 27
Knit from peg 26 to 5; lift the wrap(s) together with the stitch on the peg. Wrap and turn on peg 4
Knit from peg 5 to 27; lift the wrap(s) together with the stitch on the peg. Wrap and turn on peg 28
Knit from peg 27 to 4; lift the wrap(s) together with the stitch on the peg. Wrap and turn on peg 3

Knit from peg 4 to 28; lift the wrap(s) together with the stitch on the peg. Wrap and turn on peg 29
Knit from peg 28 to 3; lift the wrap(s) together with the stitch on the peg. Wrap and turn on peg 2
Knit from peg 3 to 29; lift the wrap(s) together with the stitch on the peg. Wrap and turn on peg 30
Knit from peg 29 to 2; lift the wrap(s) together with the stitch on the peg. Wrap and turn on peg 1*
Pegs 1 and 30 have wraps on them, when working the first round of the foot, lift both wraps on these pegs along with the stitch (treat all 3 loops on the peg as 1 loop).
Cont to Foot instructions.

Foot

Worked in the round

Next rnd: k (On the very first round, pick up the extra wraps from pegs 1 and 30)

Rep last rnd until foot measures 5 inches from end of heel. Cont with Toe

Toe

Worked in short-rows over 30 stitches.

Follow same instructions as for Heel to the *.

Pegs 1 and 30 have wraps. Knit 1 row from peg 1 to 30, lifting the extra wraps. Cut yarn leaving a 15" yarn tail.

Graft the Toe

Place stitches 1-30 on one double pointed needle. Place remaining 30 stitches on second double pointed needle.

Stitches are ready to be grafted.
Follow grafting instructions below

Thread tapestry needle with yarn tail coming from the toe area.





'Tree of Life' Christmas Stocking

Hold knitting needles parallel to each other, wrong sides of the knitted fabric together. Insert the tip of the tapestry needle (tn) through the first stitch of the front knitting needle as if you were going to purl, pull the working yarn (wy) through, leave the stitch on the knitting needle.

Insert tn through the first stitch on the back needle, as if to knit, pull the wy through, leave the stitch on the knitting needle.

Insert the tn through the first stitch on the front needle, as if to knit, pull the yarn through, slide the stitch off the needle.

Insert tn through the next stitch on the front needle, as if to purl, pull wy through, leave stitch on the knitting needle.

Insert the tn through the first stitch on the back needle as if to purl, pull wy through, slide the stitch off the needle.

Insert the tn through the next stitch on the back needle, as if to knit, pull wy through, leave the stitch on the needle.

Repeat steps 3-6, until only one stitch remains on the knitting needles. Insert the tn through that last stitch and slide it off the knitting needle, pull yarn through. Weave ends in.

Tassel Cord

Cut 12 pieces of red yarn about 14 inches long. Separate into three groups of 4 pieces of yarn (4, 4, 4). Tie a tight knot on one end. Do a simple braid with the three groups of yarn. Knot it.

Pom Pom

Create a small pom pom using both colors of yarn. Attach to one of the ends of the tassel cord.

Assembly

Place the tassel cord at one of the sides of the top of the stocking, so that the tassel hangs down to the body of the stocking and leave about 4 inches of the tassel cord hanging above the cuff, securely sew the tassel to the cuff area. Make a loop with the 4 inches by folding it to the inside of the stocking, sew it in place.

Using CC yarn, sew the Decorative Trim to the Cuff of the stocking. 1 ridge per stitch (line up a ridge with one of the small "v"). Sew BO edge of Decorative Trim to CO edge of Decorative Trim.

Weave ends in.

Steam block.

